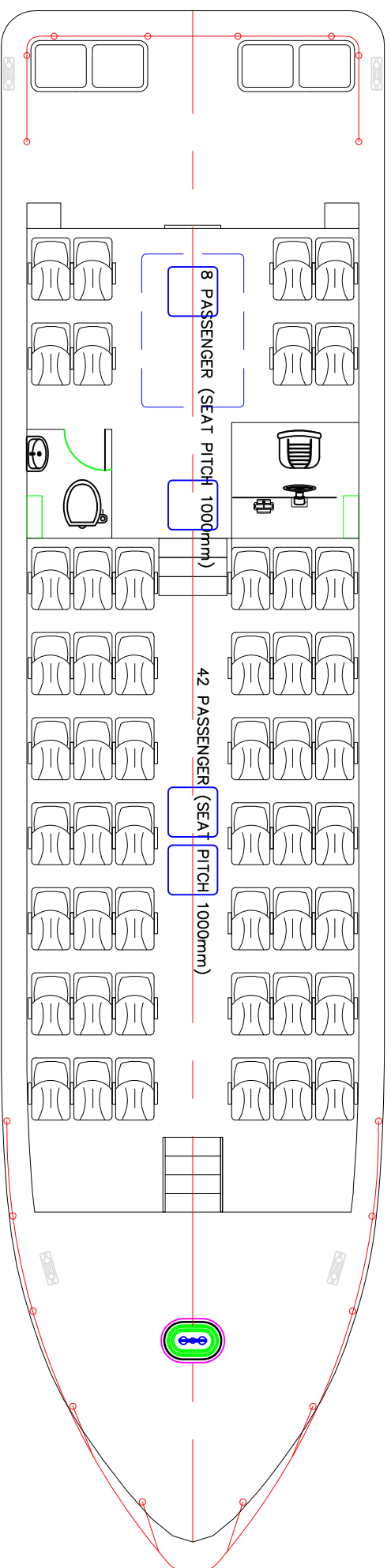
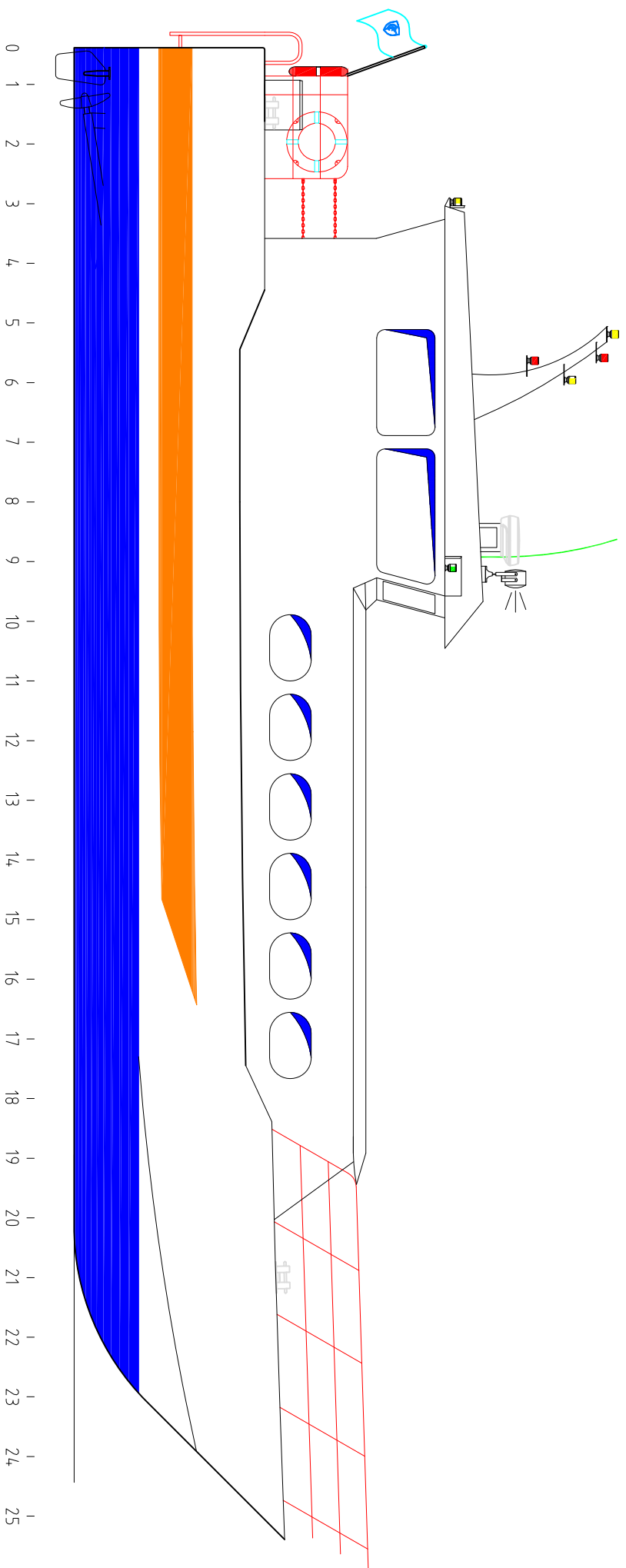


# 18m 50 PAX Passenger Ferry



Length Overall(Hull)	: 18.0m
Length Waterline	: 16.25m
Moulded Beam	: 4.50m
Moulded Draught	: 0.78m
Moulded Depth	: 2.05m
Design Weight	: 18 Tonnes
Fuel Capacity	: 2000 Litres
Fresh Water Capacity	: 600 Litres
Passenger Capacity	: 50 Seater
Main Engine Cummin	: QSM11
Propeller	: 760/5 Bladed
Design Class	: BV
Maximum Speed	: 24 Knots
Cruising	: 22 Knots

REV	MODIFICATIONS	DATE	BY

**SINA MARINE SERVICE PTE LTD**  
 21 BUKIT BATOK CRESCENT #17-83 WCEGA TOWER S658065  
 TEL: (65) 6316 1662 FAX: (65) 6570 3262  
 email/website: info@sinamarine.com

DRAWN	RAPHUS	14 JUL 2008	PROJECT	18M Passenger Ferry
CHECKED	VICTOR	14 JUL 2008	TITLE	GENERAL ARRANGEMENT
SCALE	SIZE	DWG NO.	REV	
NTS	A3	SMS-18MPF-GA	0	