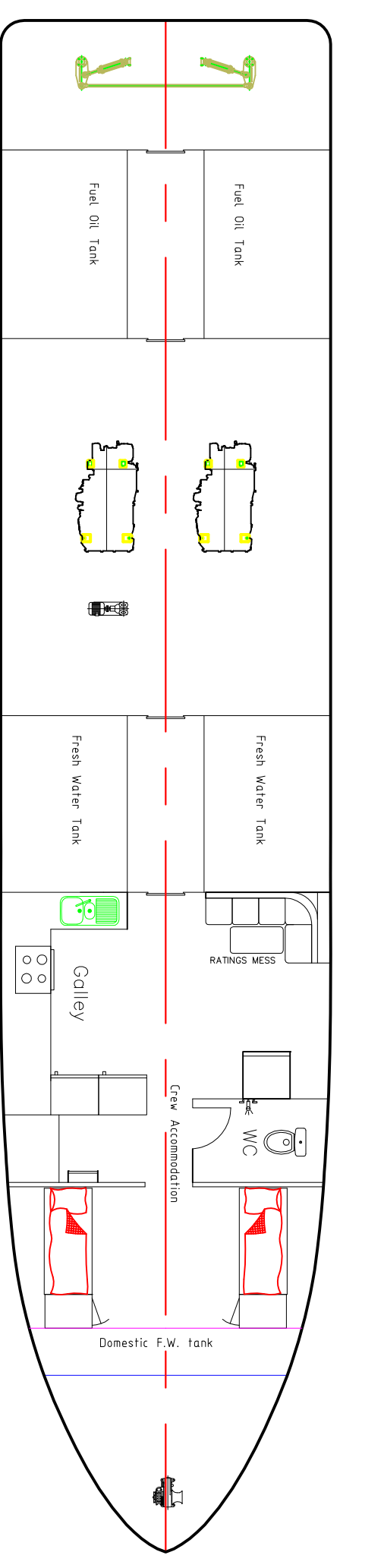
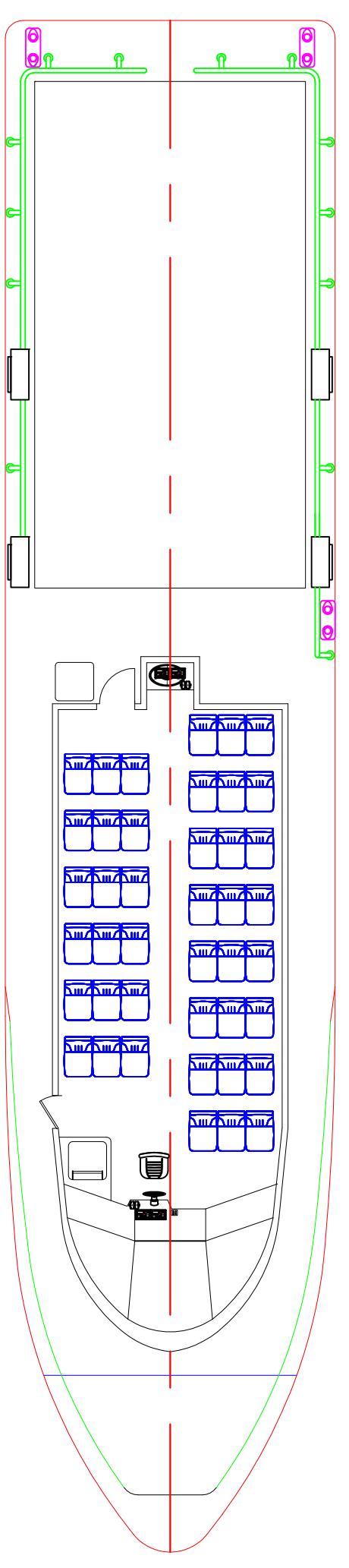
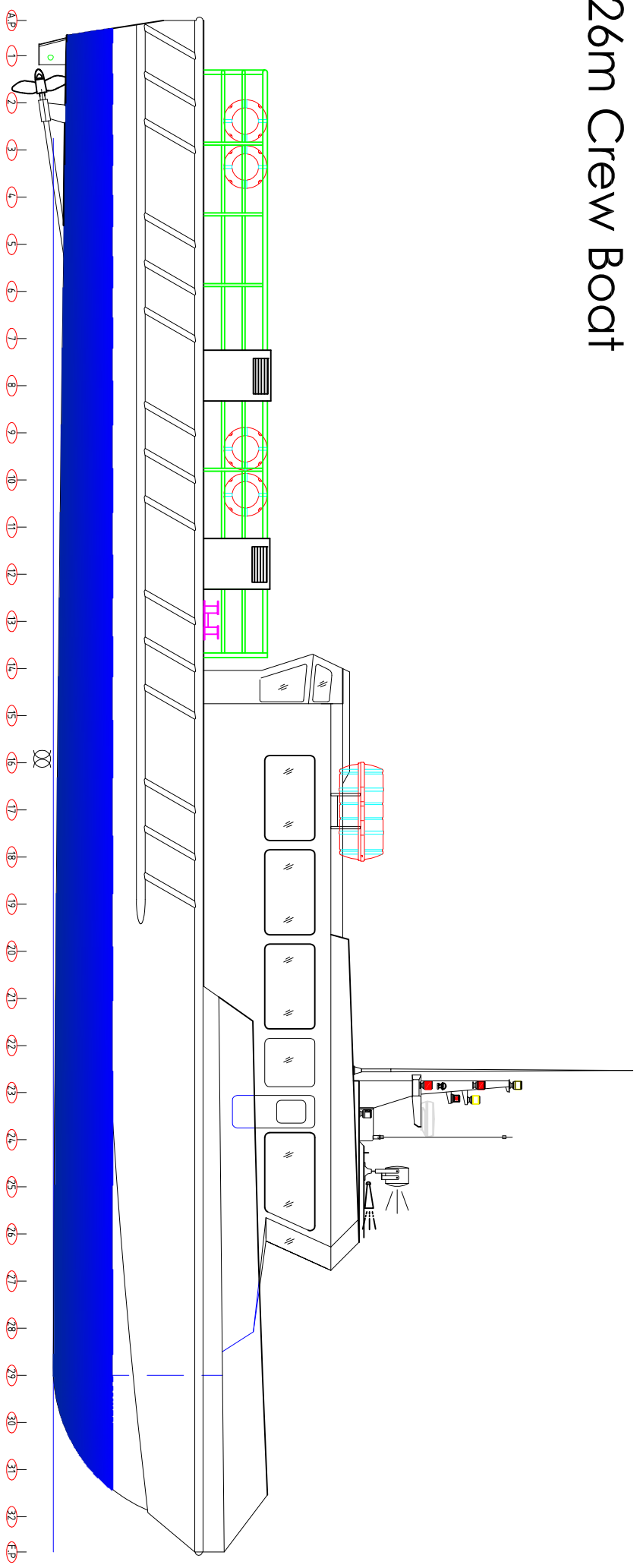


# 26m Crew Boat



## PRINCIPAL PARTICULARS

Length Overall (LOA) .....	26.0 m
Beam Overall (BOA) .....	5.60 m
Depth Amships .....	2.50 m
Propulsion System .....	Twin Conventional Screw
Main Engines .....	2 x Cummins KTA19-M3 @ Continuous Duty Rating
Transmission Gear .....	2 x ZF 665 ratio 2.593
Speed @ Trial Condition .....	21 knots
Passenger Capacity .....	45 seated passengers
Crew Complement .....	2 provided berths
Fuel Oil Capacity .....	2 x 5 tons
Transferable Fresh Water .....	2 x 14 tons
Ship's Domestic Fresh Water .....	4 tons
Cargo Deck Area .....	40 sq.m
Cargo Deck Strength .....	One tons/sq.m
Voyages .....	Sheltered Coastal Voyages
Classification .....	Bureau Veritas 1 + HULL + MACH Light Ship / Fast Crew Boat Coastal Area

REV	MODIFICATIONS	DATE	BY



**SINA MARINE SERVICE PTE LTD**  
 21 BUKIT BATOK CRESCENT #17-83 WCEGA TOWER S658065  
 TEL: (65) 6316 1662 FAX: (65) 6570 3262  
 email/website: info@sinamarine.com

DRAWN	RAPHUS	22 APR 2008	PROJECT	26M Crew Boat
CHECKED	VICTOR	24 APR 2008	TITLE	GENERAL ARRANGEMENT
SCALE	SIZE	DWG NO.	REV	
NTS	A3	SMS-26MCB-GA	0	