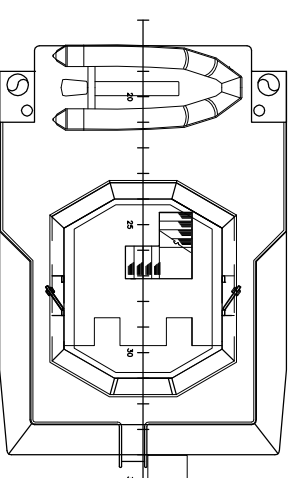
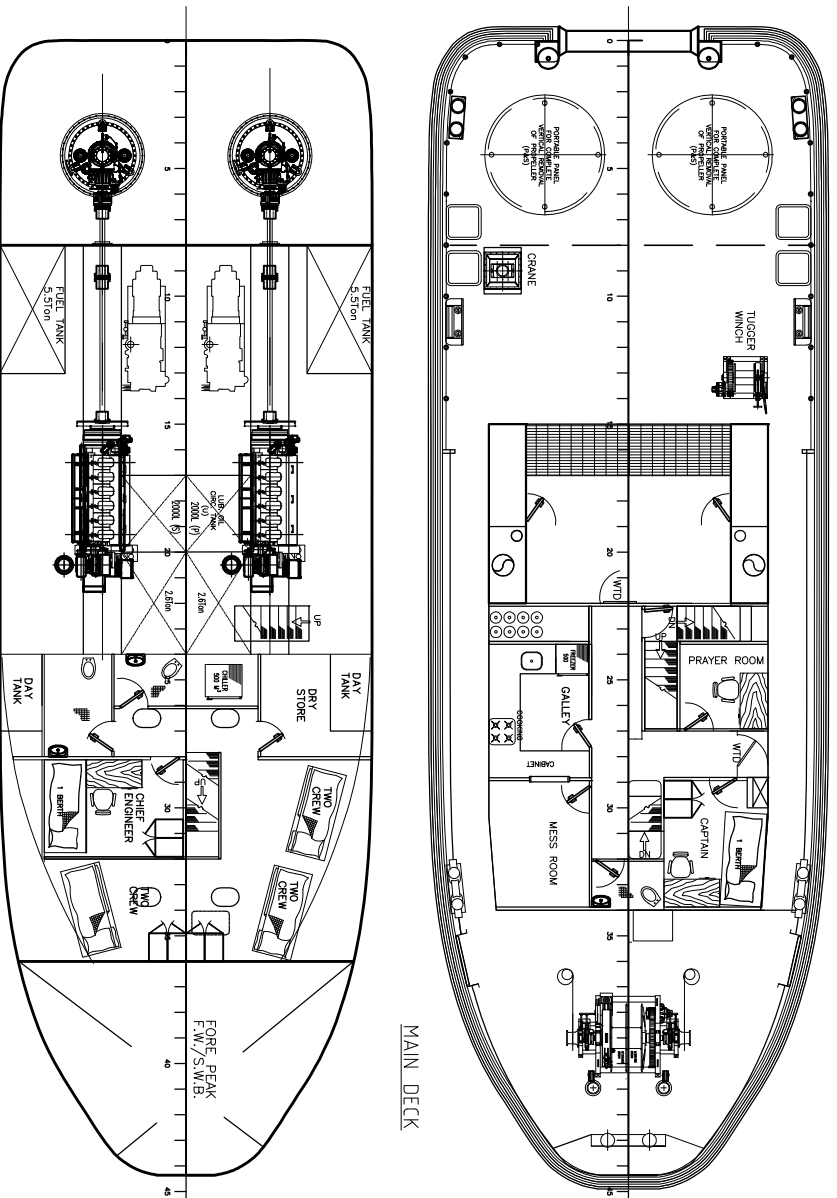
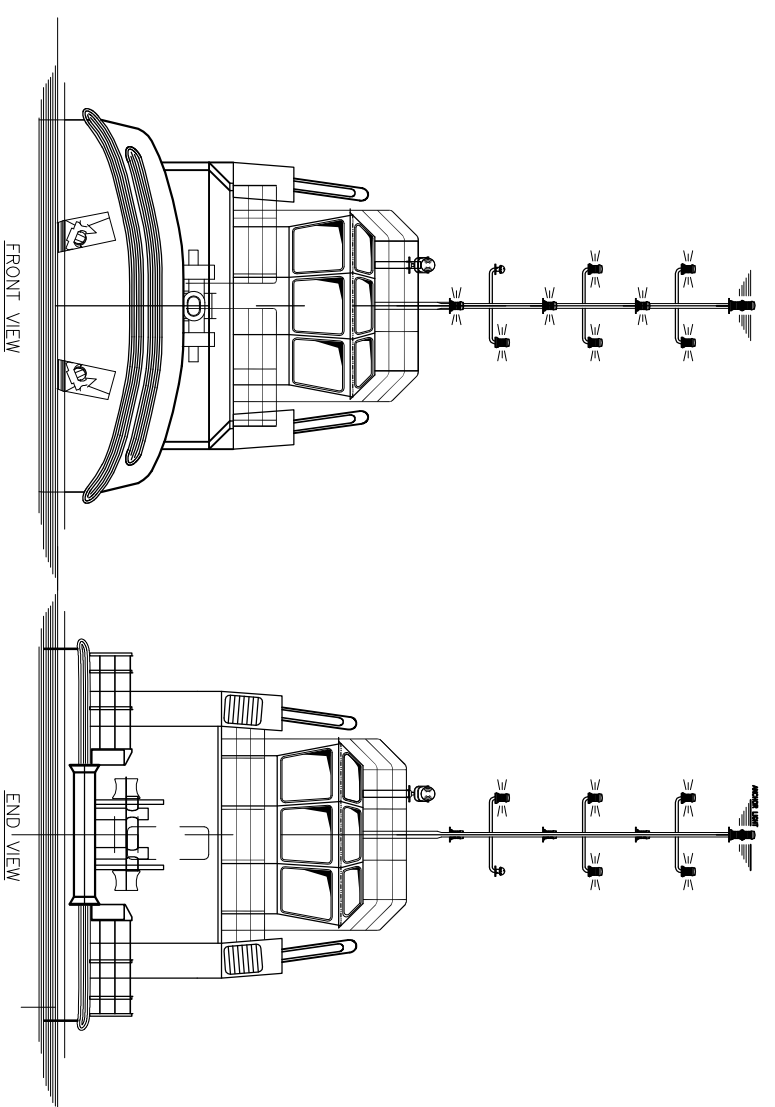
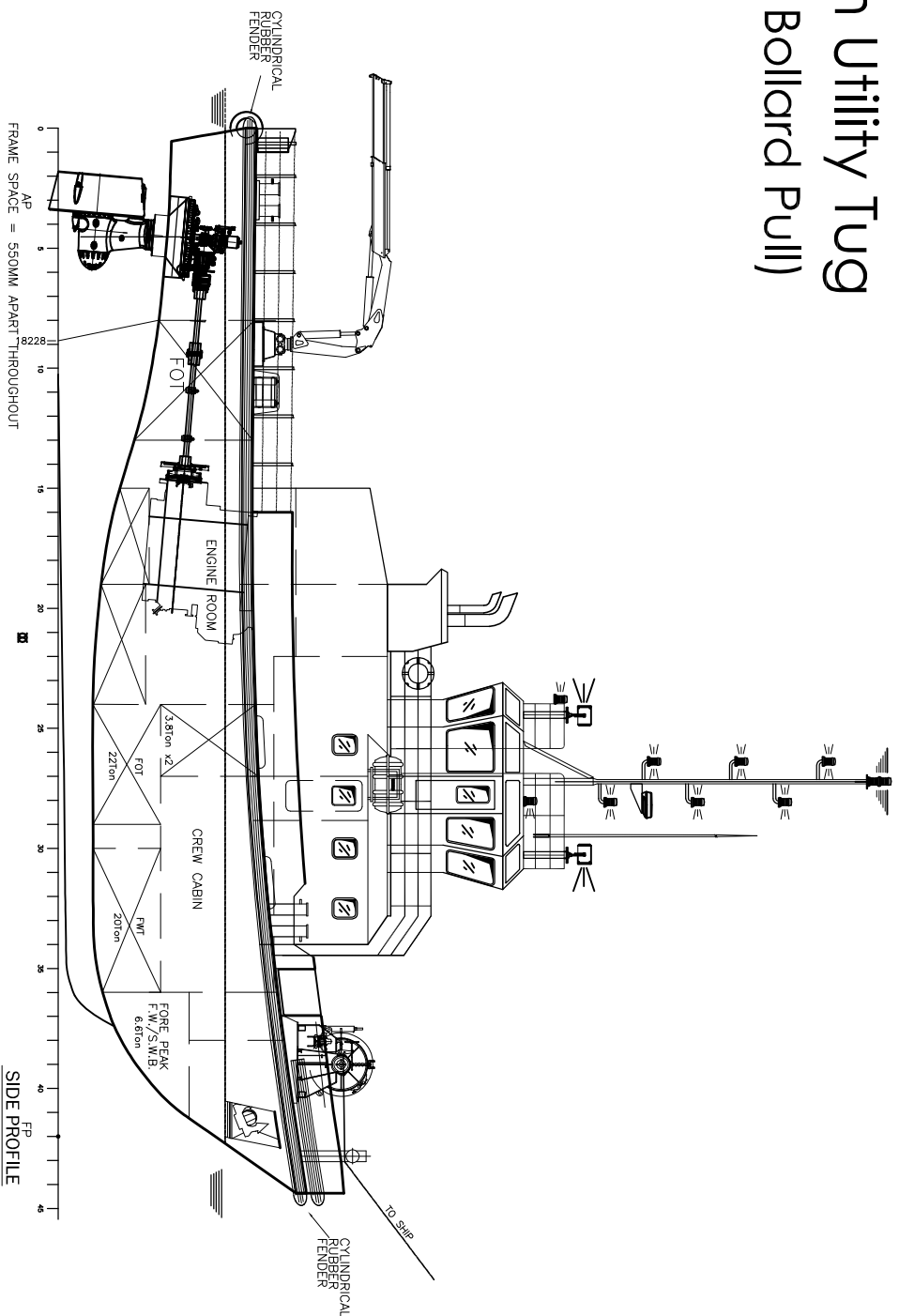


24.4m Utility Tug (25ton Bollard Pull)



PRINCIPAL PARTICULAR

L.O.A	24.400M (80.00FT)
L.W.L	23.150M (75.90FT)
L.B.P	23.178M (75.99FT)
BREADTH MOULDED	8.000M (26.23FT)
DEPTH MOULDED	3.680M (12.06FT)
DESIGN DRAFT	3.050M (10.00FT)
SUBJECT TO FREEBOARD ASSIGNMENT)	
COMPLEMENT	8 MEN
SPEED	10 KNOT
F.O. CAPACITY	46 TONS (APPROX)
F.W. CAPACITY	20 TONS (APPROX)
MAIN ENGINE	DAIHATSU 6DKW-20e 882kW@9900RPM X 2UNITS
Z-PELLER	BERG BAT318
GENERATOR	85kW X 2UNITS
FLAG	MALAYSIA
NAVIGATION AREA	COASTAL

REV	MODIFICATIONS	DATE	BY



SINA MARINE SERVICE PTE LTD
 21 BUKIT BATOK CRESCENT #17-83 WCEGA TOWER S658065
 TEL: (65) 6316 1662 FAX: (65) 6570 3262
 email/website: info@sinamarine.com

DRAWN	RAPHUS	8 OCT 2011	PROJECT	24.4m Utility Tug
CHECKED	VICTOR	8 OCT 2011	TITLE	GENERAL ARRANGEMENT
SCALE	SIZE	DWG NO.	REV	
NTS	A3	SMS-UT25-GA	0	